

Digital Performer.....	2
Control Details	2
Additional Transport Keys.....	2
Transport Wheel	2
SElect Keys	3
Pan & EQ	3
Aux.....	3
F-Key Window Shortcuts.....	4
Arrow (Cursor) Keys	4
Bank Keys	4
Master Fader Assignment	4

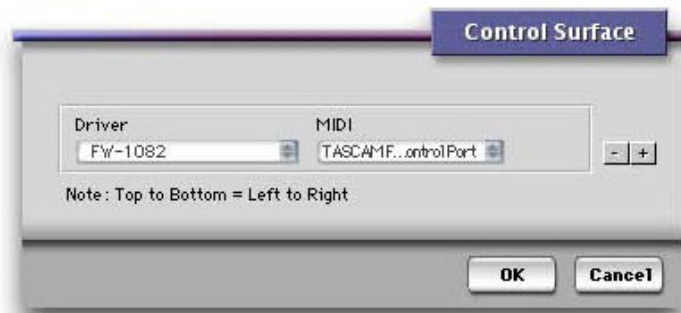
Digital Performer

For Digital Performer compatibility, the FW-1082 comes with control surface plug-ins that are compatible with DP 4.12 & higher on OSX and DP 3.11 on OS9.

Install the plug-in from the CD-ROM that is compatible with your OS and version of DP.

Open the FW-1082 control panel and select Native Mode from the Control Protocol drop down menu under the Settings tab.

Next, open the Control Surface Setup window under the Setup menu in Digital Performer and select FW-1082 Driver and assign it to TASCAM FW-1082 Control Port-1. Click OK.



Control Details

Generally the FW-1082's surface controls will function as expected, controlling their like parameters in Digital Performer. For example: Faders, Mutes, Solos and Transport Control will control those parameters in Digital Performer. Exceptions and specific details follow:

Additional Transport Keys

IN = RTZ

OUT = Go to Tail

SET + IN Sets IN point at the current playhead position

SET + OUT Sets OUT point at the current playhead position

SHIFT + IN = PUNCH

SHIFT + OUT = CYCLE

SHIFT + SET sets Punch In/Out from current selection

<<LOCATE locates to previous marker

LOCATE>> locates to next marker

SHIFT + <<LOCATE or LOCATE>> = Drop Marker at the current playhead position

Transport Wheel

The Transport Wheel acts as a simple locator in Digital Performer when the SHTL LED is Off. When the SHTL LED is On, the wheel becomes a Shuttle control – continue turning in one direction to increase the shuttle speed.

SElect Keys

Pressing an FW-1082 SElect key alone will select that channel in Digital Performer. Holding SHIFT will allow multiple selections and de-selection.

Holding the red REC key while pressing a SElect key will record-enable/disable that track.

Pan & EQ

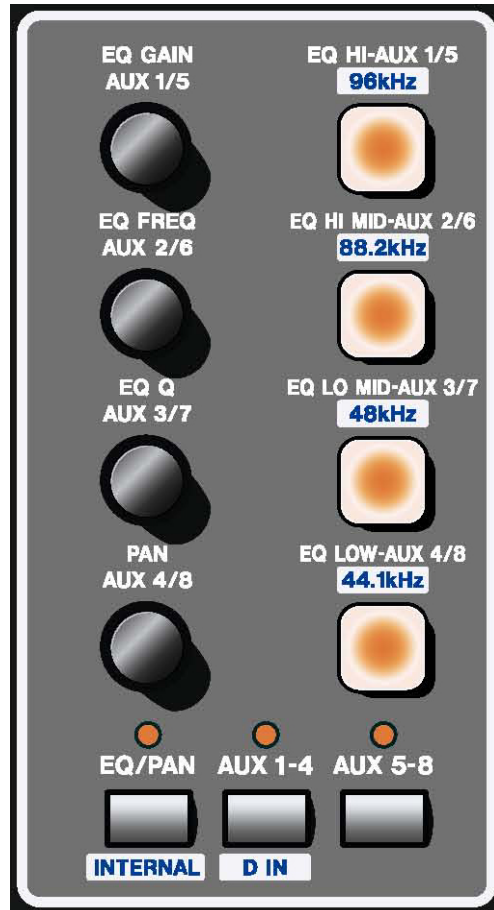
When the EQ/PAN LED is illuminated:

- The lowest of the four encoders shown at right will control the Pan parameter of the SElected channel in DP.
- The encoders labeled as GAIN, FREQUENCY and Q will control those parameters of the EQ band selected by the illuminated buttons on the SElected channel in DP. DP's four band ParaEQ is supported.
- Holding SHIFT while pressing an EQ band key will enable/disable that EQ band.
- Holding the EQ/PAN key while pressing an EQ band key will toggle through the available EQ curve types.

Aux

When AUX 1-4 is illuminated:

- The four encoders control the level of Aux Sends 1 – 4 of the SElected channel in DP.
- The four keys toggle Aux Send 1 – 4 Mute of the SElected channel in DP.
- Holding SHIFT while pressing one of the four keys toggles the Pre/Post state for that Aux Send of the SElected channel in DP. When the SHIFT key is held with AUX 1-4 illuminated, the Pre/Post state of the four sends can be seen. Illuminated means Post.
- The AUX 1-5 key has no function.



F-Key Window Shortcuts

Press one of the following keys or key combinations to toggle a window from front to back. If that window isn't already open, this action will open it.

F1 = Track Window

F2 = Mixing Window

F3 = Push front window back

F4 = Close front window

SHIFT + F1 = Effects Window

SHIFT + F2 = Control Window

SHIFT + F3 = Audio Edit Window

SHIFT + F4 = Audio Monitor Window

Arrow (Cursor) Keys

The Up and Down Arrow keys increment and decrement the SElected track, respectively. This is suited for scrolling SElected tracks while viewing the Track Window.

The Left and Right Arrow keys duplicate the Up and Down Arrow keys. This is suited for scrolling SElected tracks while viewing the Mixing Window.

If you scroll past the currently selected bank of channels, the FW-1082 will automatically switch banks to follow your selection.

Bank Keys

Press the **BANK>** key or the **<BANK** key, to shift the FW-1082's controls to the next 8 or previous 8 channels, respectively.

Hold SHIFT and press the **BANK>** key or the **<BANK** key, to shift the FW-1082's controls to the next or previous channel, respectively.

Master Fader Assignment

You can switch the master fader assignment to the next or previous virtual main by holding down **SET** while you press either the **<BANK** or **BANK>** key. The **BANK LED** indicators will show which virtual Master the master fader is being assigned to.