

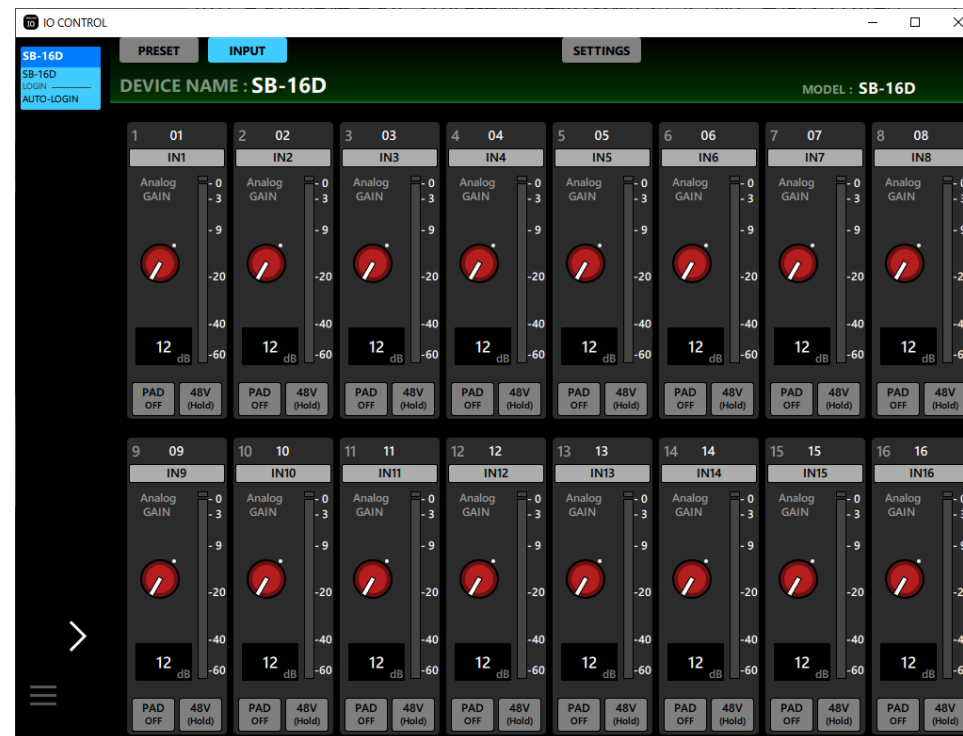
# TASCAM

D01407620A

# TASCAM IO CONTROL

USER'S MANUAL

V1.0.0



0323.MA-3658A

# TASCAM IO CONTROL

## Contents

<b>Overview</b> .....	2
<b>Conventions used in this manual</b> .....	2
<b>Trademarks</b> .....	2
<b>Operating environment</b> .....	3
iPadOS devices .....	3
Windows .....	3
Mac .....	3
SB-16D units and software versions .....	3
<b>Network structure</b> .....	3
<b>Installing the dedicated software</b> .....	4
iPadOS devices .....	4
Windows .....	4
Mac .....	5
Working with Gatekeeper .....	6
<b>Launching TASCAM IO CONTROL</b> .....	7
Launching on an iPad .....	7
Launching on a Windows/Mac computer .....	7
<b>TASCAM IO CONTROL operation modes</b> .....	7
<b>Connecting TASCAM IO CONTROL and SB-16D units on a network</b> .....	8
<b>Removing and re-adding virtual devices</b> .....	8
<b>Screen overviews</b> .....	9
Tab Area overview .....	11
<b>PRESET page</b> .....	11
Exporting preset data .....	13
Importing preset data .....	13
Storing preset data .....	14
Recalling preset data .....	14
Acquiring control privileges (PRESET page) .....	15
INPUT page .....	16
Acquiring control privileges (INPUT page) .....	18
<b>SETTINGS page</b> .....	19
Acquiring control privileges (SETTINGS page) .....	21
Network Settings Screen .....	22
GPIO Settings Screen .....	24
Factory Reset Screen .....	26

## Overview

TASCAM IO Control software is designed for standalone operation of SB-16D units.

From building a system that uses an SB-16D to daily management and operation, it supports a wide range of functions.

**Before using this software, read the Software Use License Agreement and agree to its terms.**

## Conventions used in this manual

In this manual, we use the following conventions:

- Tablets and computers are called “ devices”.
- An imaginary device used in Demo and Offline Editor modes is called a “ virtual device”.
- Messages that appear on the device are shown in quotes like this: “OK”.
- Additional information is introduced in the styles below when needed:

### TIP

These are tips about how to use the software.

### NOTE

These provide additional explanations and describe special cases.

### ATTENTION

Failure to follow these instructions could result in damage to equipment or lost data, for example.

### CAUTION

Failure to follow these instructions could result in injury.

## Trademarks

- TASCAM is a registered trademark of TEAC Corporation.
- Microsoft, Windows and Windows Media are either registered trademarks or trademarks of Microsoft Corporation in the United States and/or other countries.
- Apple, Mac, macOS, iPadOS and the App Store are trademarks of Apple Inc. in the U.S. and other countries.
- The App Store is a service mark of Apple Inc.
- IOS is a trademark or registered trademark of Cisco Systems, Inc. in the U.S. and other countries and is used under license.
- Audinate®, the Audinate logo and Dante are trademarks of Audinate Pty Ltd.  
[www.audinate.com/patents](http://www.audinate.com/patents)
- Other company names, product names and logos in this document are the trademarks or registered trademarks of their respective owners.

# TASCAM IO CONTROL

## Operating environment

Check the TEAC Global Site (<https://teac-global.com/>) for the latest information about supported operating systems and models.

### ATTENTION

Operation with each OS was confirmed with standard system setups that met the following conditions. Operation is not guaranteed, however, with all systems that meet the following conditions.

## iPadOS devices

### Supported operating systems

iPadOS 16  
iPadOS 15

### Supported devices

iPad with arm64 or newer processor

## Windows

### Supported operating systems

Windows 11 (64bit)  
Windows 10 (64bit)

### Computer hardware requirements

Computer running Windows that has Direct X11 hardware support

### CPU

Intel Core i series or newer recommended

### Memory

8 GB or more (at least 16 GB recommended)

### Open disc space

At least 150 MB

### Screen resolution/number of colors

1280×1024 (SXGA) or higher  
True Color (32-bit) recommended

## Mac

### Supported operating systems

macOS Vantura (13)  
macOS Monterey (12)  
macOS Big Sur (11)

### Supported models

Macs with Intel Core i series or Apple silicon M series processors

### Memory

8 GB or more (at least 16 GB recommended)

### Open disc space

At least 150 MB

### Screen resolution

1280×1024 (SXGA) or higher

## SB-16D units and software versions

### Supported devices

SB-16D

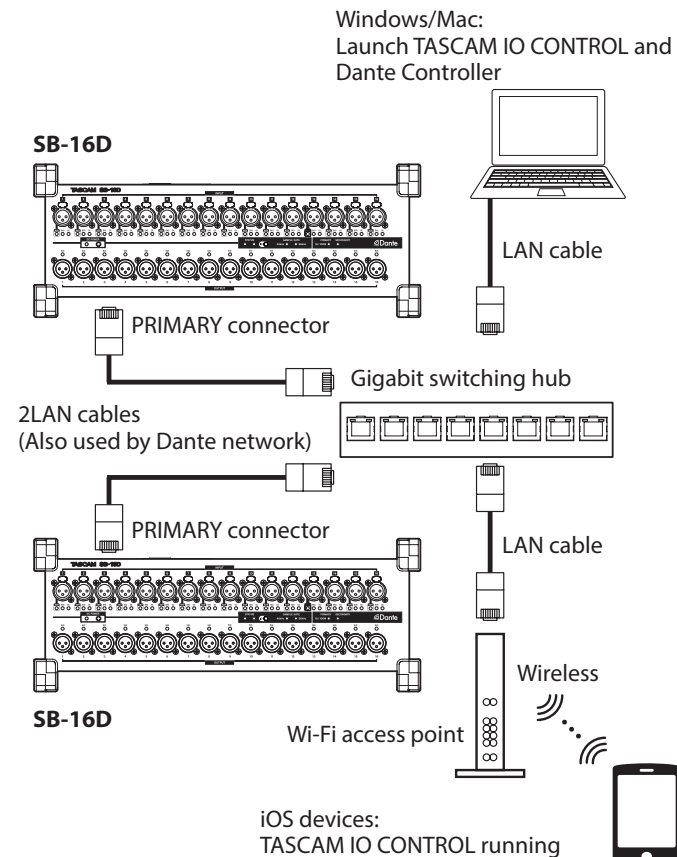
### Software versions

SB-16D units: 1.0.0\*  
TASCAM IO CONTROL software version: 1.0.0

\* We highly recommend that you always use the latest firmware for the Sonicview unit. For the latest firmware, visit the TEAC Global Site (<https://teac-global.com/>).

## Network structure

### Connection example using two SB-16D units



### ATTENTION

- Use LAN cables that are category 6 or higher for connection.
- Multiple Sonicview units and other devices can be on the same network without issue.
- The maximum number of devices that can log into one SB-16D at the same time is 10, including 9 Sonicview units and 1 other device.
- Multiple other devices cannot be logged into the same SB-16D at the same time. When multiple other devices are on the same network, they can each log into different SB-16D units.

# TASCAM IO CONTROL

## Installing the dedicated software

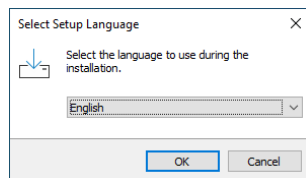
### iPadOS devices

1. Connect the iPad to the Internet.
  2. Search for the TASCAM IO CONTROL app on the App Store. Then, download and install it.
- Please be aware that you are responsible for any transmission costs related to Internet connection.

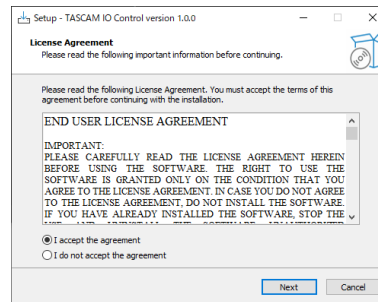
### Windows

This section explains the procedures to install TASCAM IO CONTROL.

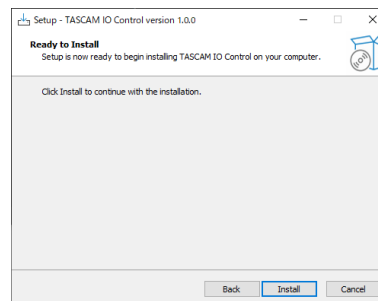
1. Connect the computer you are using to the Internet.
2. Download the TASCAM IO CONTROL application installer from the TEAC Global Site (<https://teac-global.com>).
  - Please be aware that you are responsible for any transmission costs related to Internet connection.
3. Decompress the file after downloading, and double-click the TASCAM\_IO\_CONTROL\_installer\_x.x.x.exe file ("x.xx" is the version) to launch the installer. When the installer language selection screen opens, select the language you want and click the "OK" button.



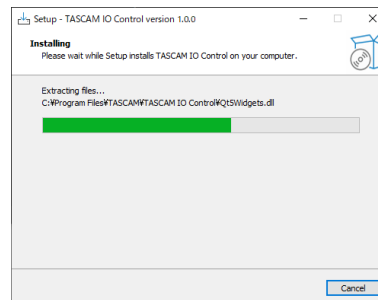
4. The software license agreement screen opens. Select "I accept the agreement" to agree to the license, and click "Next >" to continue.



5. The installation duration completion screen opens. Click the "Install" button.

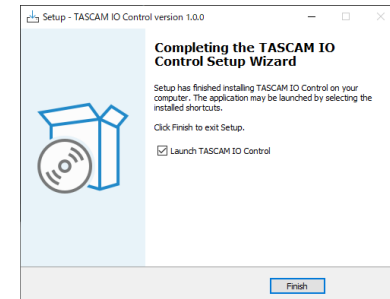


6. The installation progress screen opens. To cancel installation at this time, click the "Cancel" button.



7. The installation completion screen opens. To launch TASCAM IO CONTROL immediately, click the "Finish" button.

To launch TASCAM IO CONTROL later, remove the check (✓) from the box next to "Launch TASCAM IO CONTROL", and then click the "Finish" button.



This completes installation of the software.

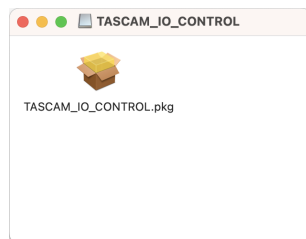
# TASCAM IO CONTROL

## Mac

### NOTE

While installing the TASCAM IO CONTROL application for Mac, a warning message like this might appear: “TASCAM\_IO\_CONTROL.pkg” can’t be opened because it was not downloaded from the Mac App Store.” If a message like this appears, follow the instructions in “Working with Gatekeeper” on page 6 and then proceed with the installation.

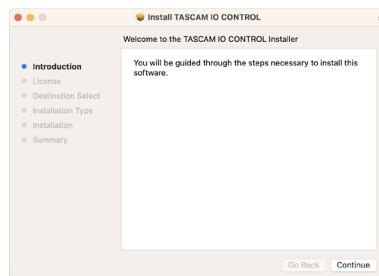
1. Download the latest TASCAM IO CONTROL app for the operating system you are using from the TEAC Global Site (<https://teac-global.com/>) and save it on the computer being used.
2. Double-click “TASCAM\_IO\_CONTROL\_x.x.x.dmg” (x.x.x is the version number), which is the saved disk image file for the Mac TASCAM IO CONTROL installer, and double-click “TASCAM\_IO\_CONTROL.pkg” inside the folder that opens.



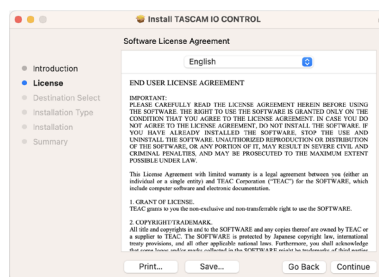
### NOTE

Depending on the computer’s settings, the downloaded zip file might not have opened automatically. In this case, open the zip file first and then double-click the disk image file.

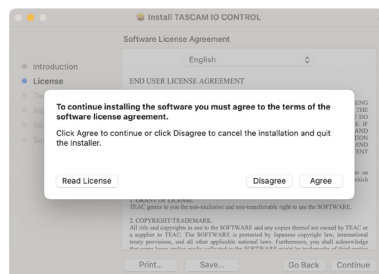
3. When the installer starts, click the “Continue” button.



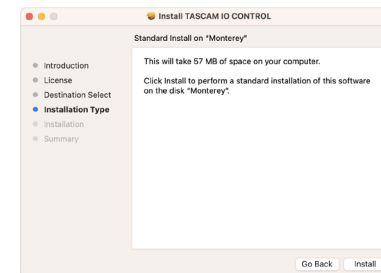
4. Next, select the desired language and click the “Continue” button.



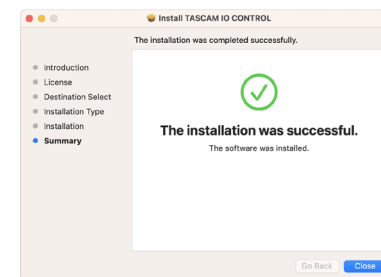
5. Click the “Read License” button and check the contents of the Software License Agreement. If you agree to the contents, click “Agree”. Then, click the “Next” button.



6. Click the “Install” button in the window that opens to start installation.



7. The following screen appears when installation has completed. The following screen appears when installation has completed. Click the “Close” button.



This completes installation of the software.

# TASCAM IO CONTROL

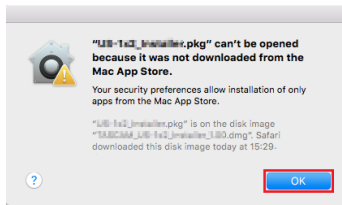
## Working with Gatekeeper

When using mac OS, depending on the Gatekeeper security function setting, a warning message might appear during installation.

The solution depends on the warning message shown. See the following explanations for details.

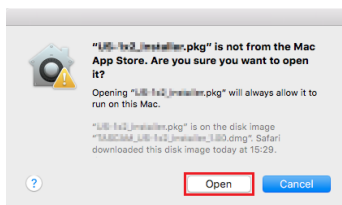
## When the Gatekeeper setting is "Allow applications downloaded from: the Mac App Store"

The following security warning might be shown: "TASCAM\_IO\_CONTROL.pkg" can't be opened because it was not downloaded from the Mac App Store."



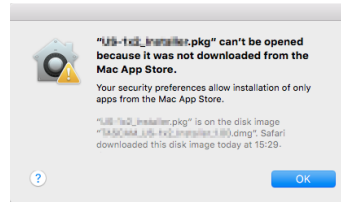
In this case, click the "OK" button to close the message. Then, control-click (or right-click) the file and click "Open" in the menu.

When the "TASCAM\_IO\_CONTROL.pkg" can't be opened because it was not downloaded from the Mac App Store. Are you sure you want to open it?" security warning message appears, click the "Open" button.



This warning message might also appear when the Gatekeeper setting is something other than "Allow applications downloaded from: the Mac App Store."

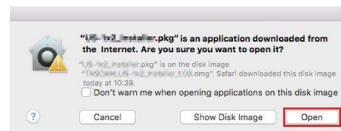
The "TASCAM\_IO\_CONTROL.pkg" can't be opened because it was not downloaded from the Mac App Store." security warning might be shown again, and the file might not be able to be opened.



In this case, copy the file from the folder where it is to the desktop or another folder, and then open it. Alternatively, change the Gatekeeper settings to "Allow apps downloaded from: App Store and identified developers" and try opening it again.

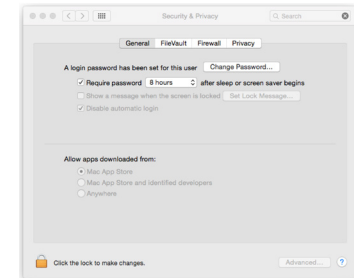
## When the Gatekeeper setting is not "Allow applications downloaded from: the Mac App Store"

The following security warning might be shown: "TASCAM\_IO\_CONTROL\_x.x.x.pkg" (x.x.x is the version number) is an application downloaded from the Internet. Are you sure you want to open it?" In this case, click the "Open" button.



## Changing the Gatekeeper setting

The Gatekeeper setting can be changed using the "Allow applications downloaded from:" item on the "General" page of the "Security & Privacy" pane of the System Preferences. To change this, you must click the lock icon (🔒) at the bottom left and enter a password to unlock the settings.



This setting will lock again when you click the 🔒 button or type command-Q to close the System Preferences or when you click "Show All" to close the open pane.

### ATTENTION

Changing the Gatekeeper setting could result in security risks. If you changed the Gatekeeper setting to decrease security (use one of the lower settings), set it back to the original setting after installing the application.

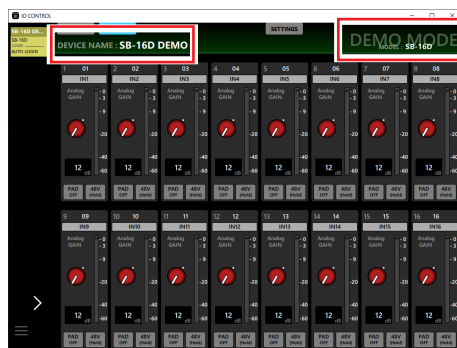
# TASCAM IO CONTROL

## Launching TASCAM IO CONTROL

The operation mode of TASCAM IO CONTROL when it launches depends on the device it is running on.

### Launching on an iPad

1. Launch TASCAM IO CONTROL.  
Login to a virtual device\* will occur automatically.  
\* A virtual device is used in Demo and Offline Editor modes.
2. After completing login, the INPUT page for the virtual device will be shown and Demo Mode will be activated.  
In Demo Mode, "DEMO" appears after the name shown for the DEVICE NAME and "DEMO MODE" appears at the top right of the screen.



- In Demo Mode, TASCAM IO CONTROL can be tried without an SB-16D unit by using a virtual device. Using TASCAM IO CONTROL in Demo Mode allows users to check the possible settings. Preset data, however, cannot be imported or exported.

#### NOTE

- Demo Mode is only supported on iPadOS devices.
- When launched, all parameters will be reset to their default values.
- Virtual devices can be removed and re-added. (See "Removing and re-adding virtual devices" on page 8.)

## Launching on a Windows/Mac computer

1. Launch TASCAM IO CONTROL.  
Login to a virtual device will occur automatically.
2. After completing login, the Input page for the virtual device will be shown and Offline Editor Mode will be activated.  
In Offline Editor Mode, "OFFLINE EDITOR" will be shown at the top right of the screen.



- In Offline Editor Mode, TASCAM IO CONTROL can use a virtual device to create and edit preset data without an SB-16D unit.
- Preset data edited in Offline Editor Mode can be exported to other devices and then imported to SB-16D units.
- By exporting preset data set on an SB-16D and importing it in Offline Editor Mode, that data can be edited again.

#### NOTE

- Offline Editor mode is not supported on iPadOS devices.
- Preset data is saved and recalled within the application management area. It can be backed up to and restored from folders selected on Windows/Mac computers.
- Preset data created in Offline Editor Mode will not be lost when the application is quit.
- When launched, all parameters will be reset to their default values.
- Virtual devices can be removed and re-added. (See "Removing and re-adding virtual devices" on page 8.)

## TASCAM IO CONTROL operation modes

TASCAM IO CONTROL has the following operation modes.

### Demo Mode

Demo Mode is activated only when TASCAM IO CONTROL is launched on an iPad.

In Demo Mode, "DEMO" appears after the name shown for the DEVICE NAME and "DEMO MODE" appears at the top right of the screen.

### Offline Editor Mode

Offline Editor Mode is activated only when TASCAM IO CONTROL is launched on a Windows/Mac computer.

In Offline Editor Mode, "OFFLINE EDITOR" will be shown at the top right of the screen.

### Remote Mode

Remote Mode can only be activated when an SB-16D is logged into the same network as a device that is running in Demo or Offline Editor mode.

See "Connecting TASCAM IO CONTROL and SB-16D units on a network" on page 8 for details about switching to Remote Mode.

# TASCAM IO CONTROL

## Connecting TASCAM IO CONTROL and SB-16D units on a network

By connecting an SB-16D with the device and setting the TASCAM IO CONTROL operation mode to Remote Mode, a single SB-16D unit can be controlled.

### NOTE

- Only one SB-16D unit can be controlled at a time. Multiple SB-16D units cannot be controlled at the same time.
- Some menu items cannot be used when logging into an SB-16D.

1. Turn the SB-16D on.
2. Connect the SB-16D's ETHERNET port to a router. (Use LAN cables that are at least category 6.)
3. Connect the device to the same router by Wi-Fi or with a wired connection.

### ATTENTION

- Connect the SB-16D's PRIMARY connector and the other device to the same network. If connections are made through a router, the software might not be able to detect devices on the network using UPnP multicasting. Even when the SB-16D unit and the other device are connected to the same hub or router, detection might not be possible depending on the model being used. For further information, please contact your network administrator.
- Only one device can log into an SB-16D from TASCAM IO CONTROL. Multiple devices cannot be logged into the same SB-16D at the same time from TASCAM IO CONTROL.

### NOTE

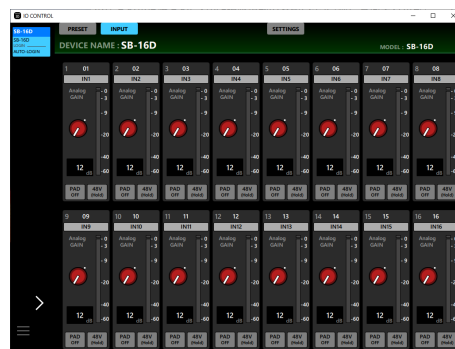
The Dante audio network and the network for control using the software are the same.

4. Launch TASCAM IO CONTROL.  
When the application detects the SB-16D, it will be added to the Device Browser Area.



If multiple SB-16D units are connected by LAN, they will all appear in the Device Browser Area.

5. Tap the SB-16D to be controlled.  
The TASCAM IO CONTROL operation mode will become Remote when the connection between the SB-16D and the device is established.



### NOTE

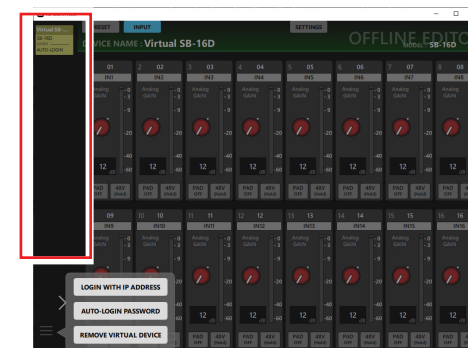
No default password is set for the SB-16D. Leave the password field blank to log in. Set the password for the SB-16D on the SETTINGS page as desired. If no password is set, settings will not be protected. (See "SETTINGS page" on page 19.)

## Removing and re-adding virtual devices

Virtual devices, which are used in Demo and Offline Editor modes, can be added and removed.

### Removing virtual devices

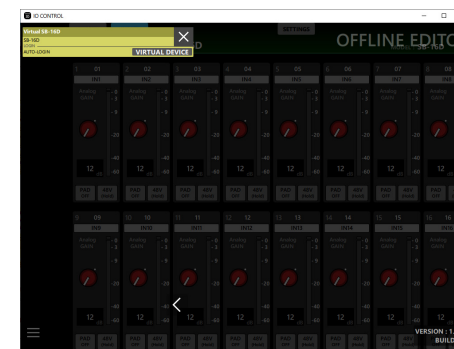
1. When a virtual device is shown in the Device Browser Area, tap the device menu button (☰) to open a menu window.



2. Tap the REMOVE VIRTUAL DEVICE button to remove that virtual device.

### NOTE

Virtual devices can also be removed using the ✕ button shown at the top right of the virtual device icon when the Device Browser Area is expanded.

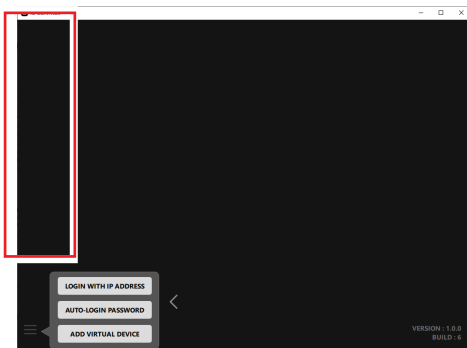




# TASCAM IO CONTROL

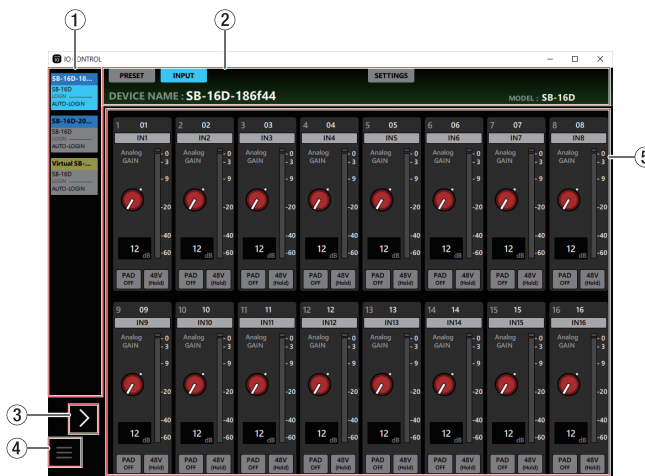
## Re-adding virtual devices

- When a virtual device is not shown in the Device Browser Area, tap the device menu button (☰) to open a menu window.



- Tap the ADD VIRTUAL DEVICE button. The virtual device will be added to the Device Browser Area.

## Screen overviews



### ① Device Browser Area

The model names, unit nicknames and login statuses of the SB-16D units that have been detected on the connected Dante network are shown here.

SB-16D units that have different network addresses or are connected through routers will not be shown here.

Indicator appearance	Login status	Meaning
 (virtual device)	Automatically logged in (not selected)	After an SB-16D device is detected, TASCAM IO CONTROL will try once to log in as an administrator using the password that it has. If login succeeds without issue, the device name will appear with the color shown to the left. Click this to enable operation of the device.

Indicator appearance	Login status	Meaning
 (virtual device)	Automatically logged in (selected)	This shows that the device is subject to the various operations in the Device Operation Area (⑤).
	Automatic login failed	The password that TASCAM IO CONNECT has does not match the administrator password for the SB-16D device. Click this indicator to open the following popup window.  Operation of the device will become possible if the password is input and login succeeds.
	Manual login	After login using the above method succeeds, "MANUAL" appears for the login status.

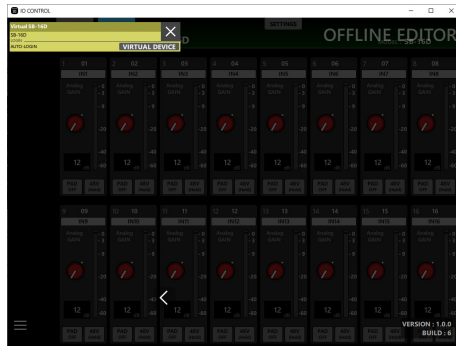
# TASCAM IO CONTROL

## ② Tab Area

Use these to switch the page shown in the Device Operation Area (⑤) and to make internal settings for the selected SB-16D. (See “Tab Area overview” on page 11.)

## ③ Device Browser

Tap this area to expand the Device Browser Area. Nicknames that appear abbreviated can be checked when this area is expanded.

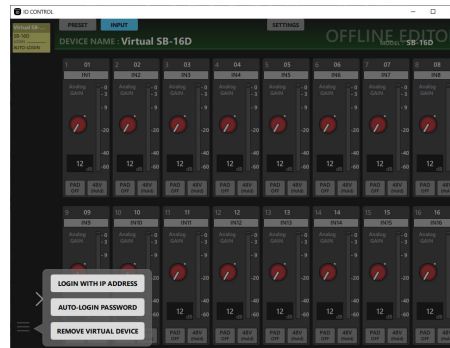


### NOTE

The TASCAM IO CONTROL version is shown at the bottom right of this screen.

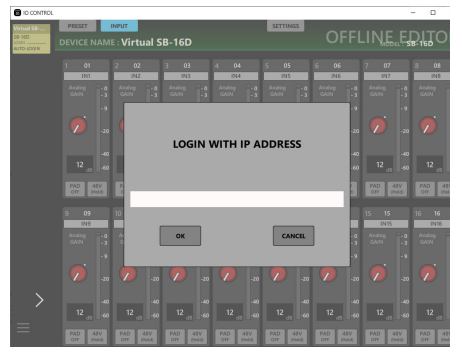
## ④ Device menu button (☰)

Tap this button to open the menu window shown below.



### ● LOGIN WITH IP ADDRESS

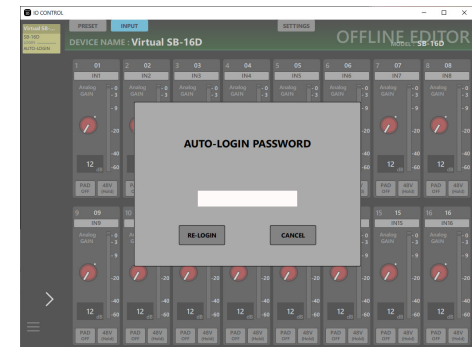
Tap this menu item to open the following screen where you can input an IP address and log in.



Use this function if detection is not possible using UPnP multicasting because, for example, DHCP is set to STATIC (DHCP OFF) for the NETWORK SETTING item on the SETTINGS page and devices are on different network segments.

### ● AUTO-LOGIN PASSWORD

Tap this menu item to open the following screen where you can register a new password.



In addition to uppercase and lowercase alphabet letters and numbers, the following characters can also be used.

()[]{}!@#\$%&.,;\_`^~

The maximum number of characters is 20.

After inputting the new password in the AUTO-LOGIN PASSWORD field, tap the RE-LOGIN button to log in with the new password. This password will be saved by TASCAM IO CONTROL and used for login the next time.

### ● REMOVE VIRTUAL DEVICE/ADD VIRTUAL DEVICE

Tap this menu item to remove/re-add that virtual device. (See “Removing and re-adding virtual devices” on page 8.)

## ⑤ Device Operation Area

Use this to make settings for the selected SB-16D.

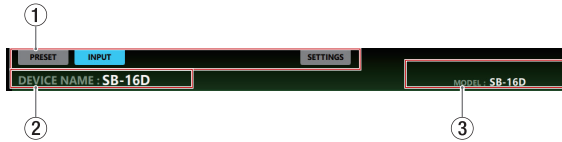
Tap a screen selection button in the Tab area (②) to open that page in the operation area. (See “Tab Area overview” on page 11.)

# TASCAM IO CONTROL

## Tab Area overview

Selection buttons for each page are shown at the top of the screen.

The locations of the buttons depend on the size of the window or tablet display.



### ① Page selection buttons

Tap a page selection button to open that page.

The selection button for the open page appears lit.

Button	Explanation
PRESET	This page shows information about the current preset and can be used to set and work with presets.
INPUT	This shows information about the signals being input and can be used to make input settings.
SETTING	This shows the status of the connected SB-16D and can be used to make related settings.

### ② DEVICE NAME

This shows the name set for the DEVICE NAME item on the SETTINGS page. (See "SETTINGS page" on page 19.)

### ③ MODEL

This shows the model of the device connected to TASCAM IO CONTROL.

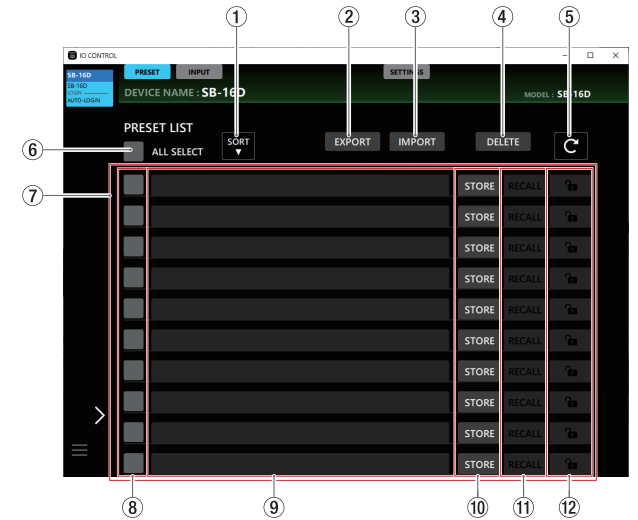
## PRESET page

Preset data can be managed and edited on the PRESET page. In this explanation, areas where preset data are saved are called "data slots".

The following settings are saved in preset data.

- INPUT page
  - Channel Name
  - Gain
  - Pad
  - Phantom
- SETTINGS page
  - Device Name (subject to Device Name Recall Safe)
  - Password (subject to Network Recall Safe)
  - LED Brightness
  - Various DC Power settings
  - Sampling Frequency
  - Reference Level
  - Meter Headroom
  - Various Control Network settings (subject to Network Recall Safe)
  - GPIO Settings

A maximum of 10 sets of preset data can be saved.



### NOTE

If another Sonicview has control privileges for the SB-16D shown, the following functions cannot be used.

OVERWRITE, RECALL, DELETE, LOCK, UNLOCK

In this state, control privileges will be requested if these buttons are used. (See "Acquiring control privileges (PRESET page)" on page 15.)

### ① SORT button

Tap this button to sort preset data by name.

### ② EXPORT button (Windows/Mac versions only)

This exports preset data in the built-in memory of the SB-16D to the computer. (See "Exporting preset data" on page 13.)

### NOTE

- The EXPORT function is not supported in the iPadOS version.
- Use this to back up preset data and to copy it to other SB-16D units.

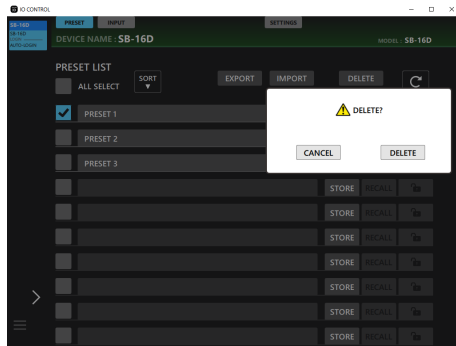
### ③ IMPORT button (Windows/Mac versions only)

Use this to import preset data that has been exported to the computer. (See "Importing preset data" on page 13.)

# TASCAM IO CONTROL

## ④ DELETE button

This will delete all unlocked preset data in data slots that have checks (✓) in their check boxes (⑧). Tap this button to open a confirmation message for deleting the selected preset data.



- Tapping the DELETE button will delete the selected preset data and close the confirmation message.
- Tap the CANCEL button to close the confirmation message.

## ⑤ C button

Tap this to update the preset list.

## ⑥ ALL SELECT

Put a check (✓) here to select all preset data shown in the preset list.

## ⑦ Preset list area

This shows a list of the saved preset data.

## ⑧ Check boxes

Put checks (✓) in these boxes to export preset data sets to files or to delete them.

Tapping the C (⑤) button will clear all the selection check marks (✓).

## ⑨ Preset names

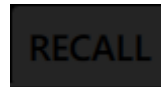
- This shows the names of presets.
- Tap this area to make the cursor blink, enabling character input and preset name editing. Up to 96 English letters and numbers can be input.
- After inputting a preset name, if there is no preset data, tapping the keyboard Enter button will open a message confirming storage. Change the preset name if preset data already exists. This changes the preset name if preset data already exists.
- Tap the keyboard Escape button when editing to discard the changes.

## ⑩ STORE/OVERWRITE buttons

Tap a STORE button for any empty data slot to store (save) the current settings. For slots that are not empty, these become OVERWRITE buttons that can be used to overwrite the data. (See “Storing preset data” on page 14.)

## ⑪ RECALL buttons

- Tap a RECALL button for a data slot to recall its preset data settings. (See “Recalling preset data” on page 14.)
- This button will appear as shown below for empty data slots.

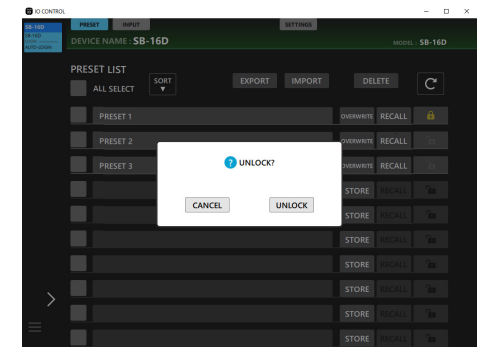


## ⑫ LOCK/UNLOCK buttons

- These show the locked/unlocked states of the data slots.

Button	Explanation
	Setting data has not been saved in the data slot
	Unlocked
	Locked

- Tap a LOCK button for a data slot to lock its preset data. When a data slot is locked, the preset name cannot be changed and the preset data cannot be overwritten or deleted.
- To unlock a data slot, tap this button to open a confirmation message.

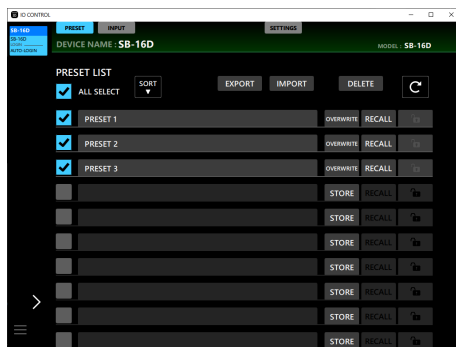


- Tap the UNLOCK button to unlock the slot and close the confirmation message.
- Tap the CANCEL button to close the confirmation message without unlocking the slot.

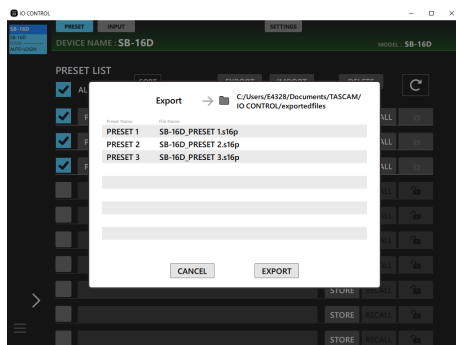
# TASCAM IO CONTROL

## Exporting preset data

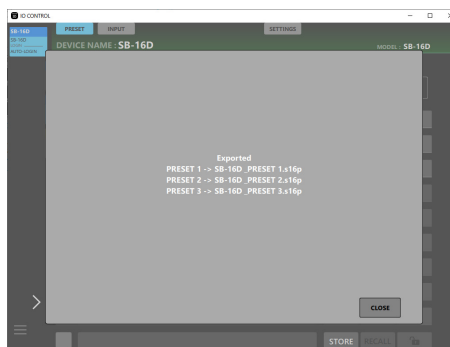
1. Tap the check box (Ⓢ) for the preset name to be exported.  
Tap the ALL SELECT check box (Ⓣ) to export all preset data.



2. Tap the EXPORT button.  
This opens the Export Window.



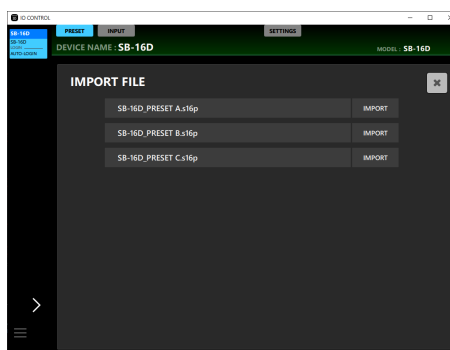
3. Tap the EXPORT button in the window to export the data.  
The following message will appear after exporting completes.



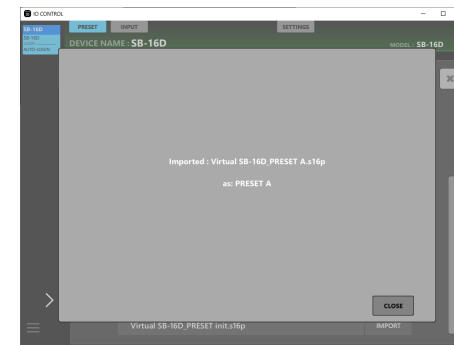
Tap the CLOSE button in the window to close it.

## Importing preset data

1. Tap the IMPORT button.  
This opens a window with a list of files that can be imported.



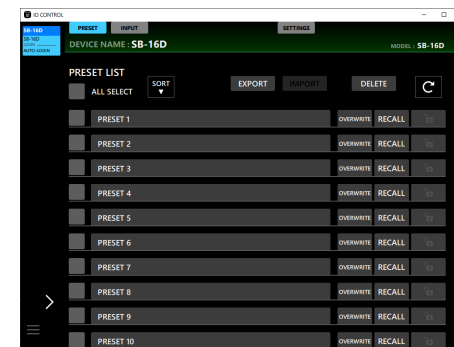
2. Tap the IMPORT button for the preset data to be imported.  
The data will be imported to the highest open data slot.  
The following message will appear after importing completes.



3. Tap the CLOSE button in the message to return to the IMPORT FILE list window.
4. Tap the button at the top right of the IMPORT FILE list window to close it.

### NOTE

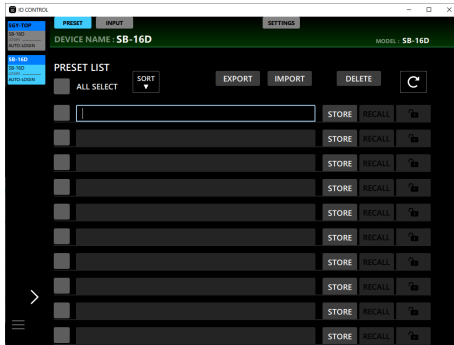
If no data slots are empty, the IMPORT buttons will appear disabled and be unusable.



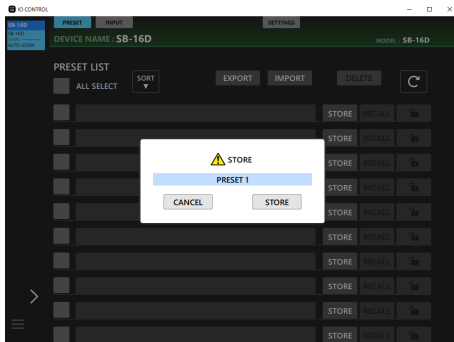
# TASCAM IO CONTROL

## Storing preset data

1. Tap the preset name area for the empty data slot where you want to store (save) the current settings.  
This will make the cursor blink and enable character input.



- Up to 96 alphabetical characters and numbers or about 32 Japanese characters can be input for preset names.
2. After inputting the preset name, tap the keyboard Enter key or the STORE button.  
A confirmation message will appear.



### NOTE

- If the STORE button is pressed without entering a preset name, a confirmation message will appear with it automatically set as "PRESET X" (X is a number that corresponds to the data slot position).
- The preset name can also be edited in the confirmation message.

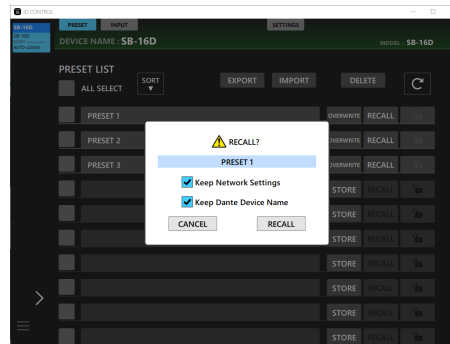
3. After confirming the preset name, tap the STORE button.  
This will create the preset and close the window.
  - If a preset with the same name already exists in the preset list, "\_X" (X is a number) will be added to the name when the preset is stored.
  - Tap the CANCEL button to cancel storing and close the confirmation message.

### NOTE

OVERWRITE buttons will appear instead of STORE buttons for slots that are not empty. Following the same procedures as above will overwrite presets.

## Recalling preset data

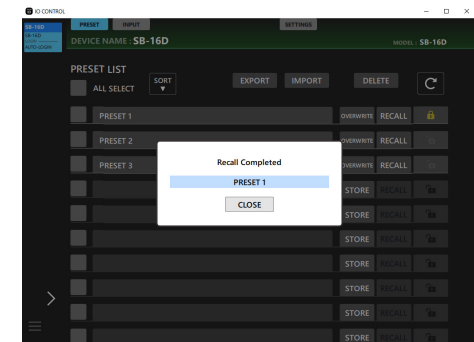
Tap the RECALL button for the data slot with the preset to be recalled.  
A confirmation message will appear.



Item	Explanation
Keep Network Settings	If the check (✓) is added, the SB-16D password and control network settings will be retained. If the check (✓) is removed, the preset settings will be applied to the SB-16D password and control network settings. (This has a check (✓) by default.)
Keep Dante Device Name	If the check (✓) is added, the SB-16D Device Name setting will be retained. If the check (✓) is removed, the preset setting will be used for the SB-16D Device Name. (This has a check (✓) by default.)

- Tapping the RECALL button on the confirmation message will recall the snapshot and close the message.
- Tapping the CANCEL button on the confirmation message will close the message without recalling.

A message will appear after recalling completes. This message will disappear automatically 3 seconds after appearing.



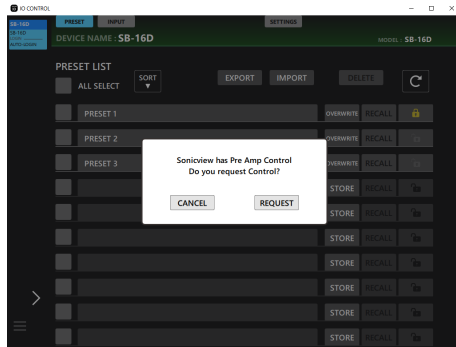
# TASCAM IO CONTROL

## Acquiring control privileges (PRESET page)

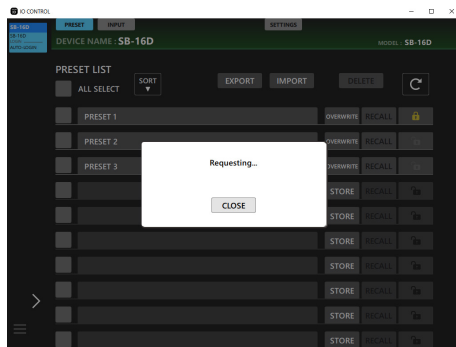
If another Sonicview has control privileges for the SB-16D shown, the following functions cannot be used.

OVERWRITE, RECALL, DELETE, LOCK, UNLOCK

In this state, control privileges will be requested if these buttons are used.

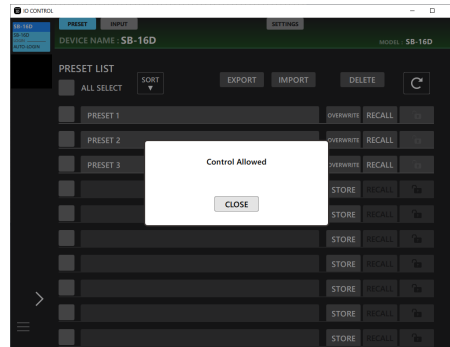


- Tapping the CANCEL button on the confirmation message will close the message without requesting control privileges.
- Tap the REQUEST button in the confirmation message to request control privileges from the Sonicview that has them. The screen shown below will appear until a response arrives.

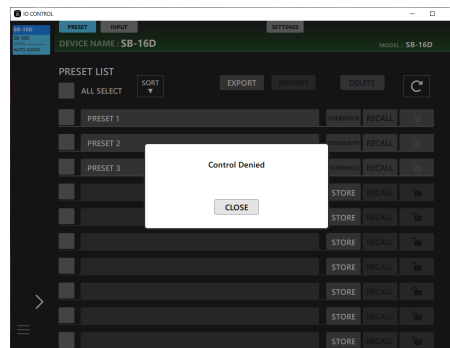


This screen can be closed, but doing so will not cancel the request.

- If permission is granted by the Sonicview that received the request  
The message will change to "Control Allowed". Tap the CLOSE button to enable the use of various operations.



- If permission is refused by the Sonicview that received the request  
The message will change to "Control Denied". Tapping the CLOSE button will not enable the use of various operations.



The "Control Allowed" or "Control Denied" message will automatically disappear after 3 seconds.

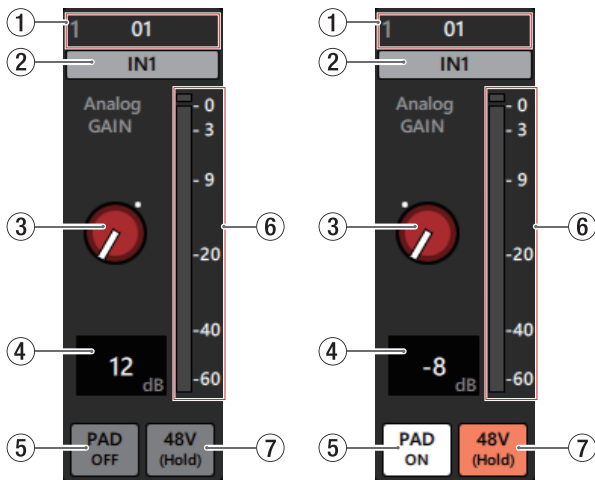
# TASCAM IO CONTROL

## INPUT page

The INPUT page shows information about the signals being input and can be used to make input settings.



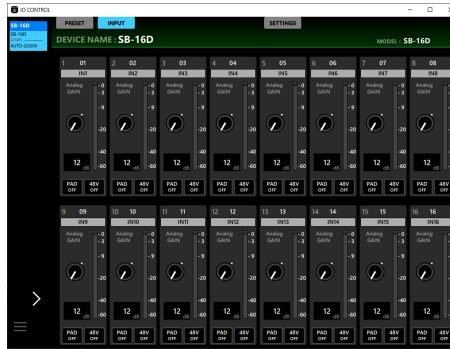
Windows INPUT page



INPUT page details

### NOTE

If another Sonicview has control privileges for the SB-16D shown, the knobs and buttons will appear black as shown in the illustration below and cannot be controlled. (See “Acquiring control privileges (INPUT page)” on page 18.)



Example of appearance when a different Sonicview has control privileges

### ① Dante Channel Label

This shows the Dante Channel Label, which can be edited from Dante Controller.

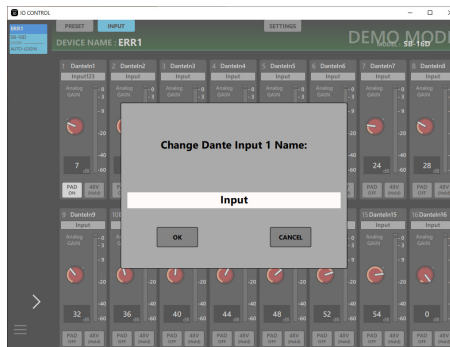
This cannot be edited from IO CONTROL.

The number of characters that can be shown are different with Dante Controller.

### ② Input channel name

- This shows the input channel name.

- Click this area to open a window where the input channel name can be changed.



Click this area to make the cursor blink, enabling character input.

Up to 8 alphabetical characters can be input.

### ③ Analog GAIN knob

This adjusts the input level from the analog input jack.

Drag the Analog GAIN knob up and down to adjust the input level.

The gain value of the Analog GAIN knob is shown in the Analog GAIN level display area (④).

### When Analog Reference Level is +6 dBu and Digital Reference Level is -9 dBFS

PAD button setting	Range
OFF	+3 (default) – +57
ON	-17 – +37

### When Analog Reference Level is +4 dBu and Digital Reference Level is -20 dBFS

PAD button setting	Range
OFF	+12 (default) – +66
ON	-8 – +46

### When Analog Reference Level is +4 dBu and Digital Reference Level is -18 dBFS

PAD button setting	Range
OFF	+10 (default) – +64
ON	-10 – +44

### When Analog Reference Level is +4 dBu and Digital Reference Level is -16 dBFS

PAD button setting	Range
OFF	+8 (default) – +62
ON	-12 – +42

### When Analog Reference Level is +4 dBu and Digital Reference Level is -14 dBFS

PAD button setting	Range
OFF	+6 (default) – +60
ON	-14 – +40



# TASCAM IO CONTROL

## When Analog Reference Level is 0 dBu and Digital Reference Level is -20 dBFS

PAD button setting	Range
OFF	+8 (default) – +62
ON	-12 – +42

## When Analog Reference Level is 0 dBu and Digital Reference Level is -18 dBFS

PAD button setting	Range
OFF	+6 (default) – +60
ON	-14 – +40

### NOTE

#### Explanation of Analog GAIN values

When signals at the Analog Reference Level (+6 dBu, +4 dBu, 0 dBu) are input, the Analog GAIN value that becomes the Digital Reference Level (-9 dBFS, -14 dBFS, -16 dBFS, -18 dBFS, -20 dBFS) at the digital stage is shown as "0".

#### ④ Analog GAIN level display area

This shows the level of the Analog GAIN knob above it as a decibel value.

The Analog GAIN level can be set by tapping here and entering it with a keyboard.

#### ⑤ PAD button

Tap this button to turn the -20dB pad on/off. (Default: off)  
When this button is on, it will appear highlighted.

### NOTE

When the pad is switched on/off, the Analog GAIN value will be controlled as shown below so that it changes as little as possible.

## When Analog Reference Level is +6 dBu and Digital Reference Level is -9 dBFS

Status before switching pad setting	Analog GAIN after switching pad setting
Analog GAIN: +3 – +37	Same value
PAD ON/Analog GAIN: -17 – +2	+3
PAD OFF/Analog GAIN: +38 – +57	+37

## When Analog Reference Level is +4 dBu and Digital Reference Level is -20 dBFS

Status before switching pad setting	Analog GAIN after switching pad setting
Analog GAIN: +12 – +46	Same value
PAD ON/Analog GAIN: -8 – +11	+12
PAD OFF/Analog GAIN: +47 – +66	+46

## When Analog Reference Level is +4 dBu and Digital Reference Level is -18 dBFS

Status before switching pad setting	Analog GAIN after switching pad setting
Analog GAIN: +10 – +44	Same value
PAD ON/Analog GAIN: -10 – +9	+10
PAD OFF/Analog GAIN: +45 – +64	+44

## When Analog Reference Level is +4 dBu and Digital Reference Level is -16 dBFS

Status before switching pad setting	Analog GAIN after switching pad setting
Analog GAIN: +8 – +42	Same value
PAD ON/Analog GAIN: -12 – +7	+8
PAD OFF/Analog GAIN: +43 – +62	+42

## When Analog Reference Level is +4 dBu and Digital Reference Level is -14 dBFS

Status before switching pad setting	Analog GAIN after switching pad setting
Analog GAIN: +6 – +40	Same value
PAD ON/Analog GAIN: -14 – +5	+6
PAD OFF/Analog GAIN: +41 – +60	+40

## When Analog Reference Level is 0 dBu and Digital Reference Level is -20 dBFS

Status before switching pad setting	Analog GAIN after switching pad setting
Analog GAIN: +8 – +42	Same value
PAD ON/Analog GAIN: -12 – +7	+8
PAD OFF/Analog GAIN: +43 – +62	+42

## When Analog Reference Level is 0 dBu and Digital Reference Level is -18 dBFS

Status before switching pad setting	Analog GAIN after switching pad setting
Analog GAIN: +6 – +40	Same value
PAD ON/Analog GAIN: -14 – +5	+6
PAD OFF/Analog GAIN: +41 – +60	+40

#### ⑥ Level meter

This shows the signal level before the Dante output.

- Each level meter has an overload indicator at its top.
- Level meter movement might be delayed or stop depending on the network setup and Wi-Fi connection conditions.

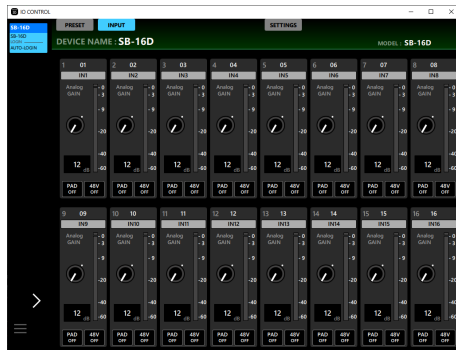
#### ⑦ 48V button

Touch and hold this button to turn phantom power on/off. When phantom power is on, the button will be highlighted.

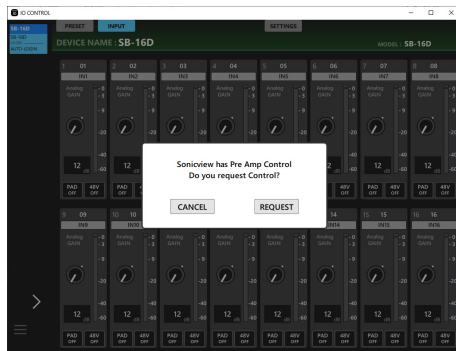
# TASCAM IO CONTROL

## Acquiring control privileges (INPUT page)

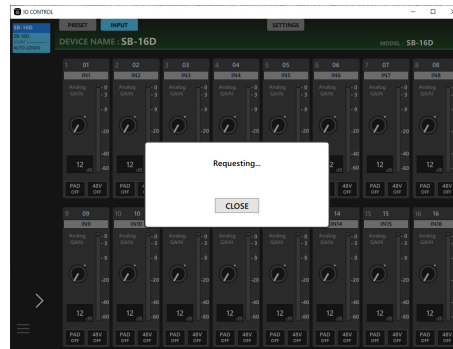
If another Sonicview has control privileges for the SB-16D shown, the knobs and buttons will appear black as shown in the illustration below and cannot be controlled.



Trying to operate the Analog GAIN knobs or PAD buttons, for example, will cause a message confirming request for control privileges to appear.

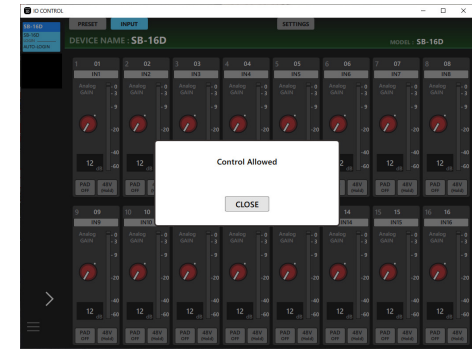


- Tapping the CANCEL button on the confirmation message will close the message without requesting control privileges.
- Tap the REQUEST button in the confirmation message to request control privileges from the Sonicview that has them. The screen shown below will appear until a response arrives.

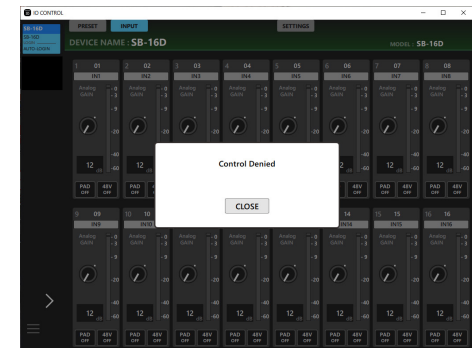


This screen can be closed, but doing so will not cancel the request.

- If permission is granted by the Sonicview that received the request  
The message will change to "Control Allowed" and the colors of the knobs and buttons will also change.  
Closing this message will enable the use of various operations.



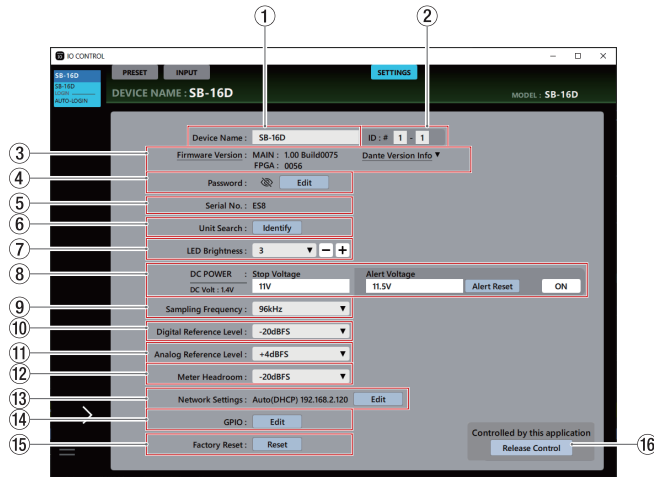
- If permission is refused by the Sonicview that received the request  
The message will change to "Control Denied". Closing this message will not enable the use of various operations.



The "Control Allowed" or "Control Denied" message will automatically disappear after 3 seconds.

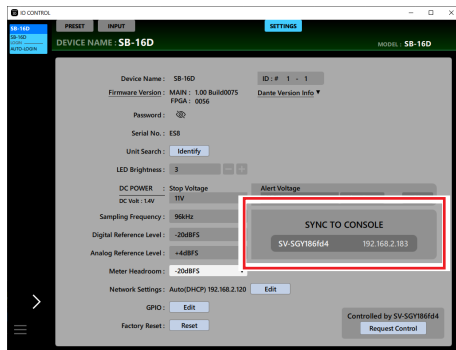
## SETTINGS page

The SETTINGS page shows the status of the connected SB-16D and can be used to make related settings.



### NOTE

If another Sonicview has control privileges for the SB-16D shown, the Dante Device Name and IP for that device will appear as follows and control will not be possible. (See “Acquiring control privileges (SETTINGS page)” on page 21.)



Example of appearance when a different Sonicview has control privileges

### ① Device Name

This shows the name of the SB-16D unit that is shown in the DEVICE NAME of the tab area.

Tap this area to make the cursor blink, enabling character input.

Up to 31 alphabetical characters can be input.

### NOTE

When the Device Name is changed, the Device Name that can be seen with Dante Controller will also be changed.

The Device Name shown here and in Dante Controller have different limits on the number and types of characters that can be used.

If the Device Name exceeds the limits of Dante Controller, it will be changed automatically.

For details about the limits, see the Dante Controller Operation Manual.

### ② ID

This is the Device ID for the SB-16D shown.

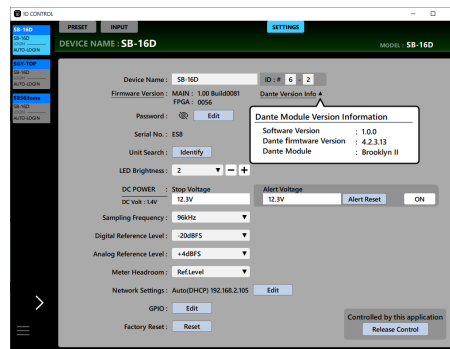
Tap either field to make the cursor blink in it, enabling input of numbers from 1 to 16.

### ATTENTION

Be careful to set the device ID for this unit so that it is not the same as another SB-16D connected to the same network.

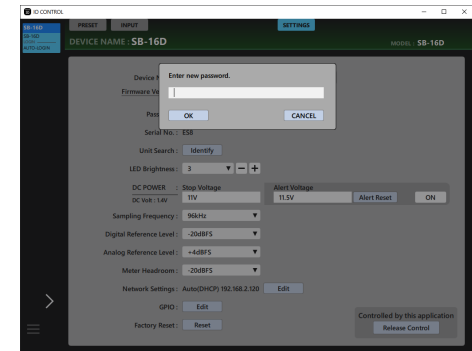
### ③ Firmware Version

- This shows the firmware version of the connected SB-16D.
- Tap “Dante Version Info” to open the Dante Module Version Information Screen.



### ④ Password

To change the login screen password, tap the Edit button to open the “Enter new password” window.



In addition to uppercase and lowercase alphabet letters and numbers, the following characters can also be used.

()[]{}!@#\$%&.,;\_`^`~

The maximum number of characters is 20.

### NOTE

The password is blank when unit is shipped new. If no password is set, settings will not be protected.

### ⑤ Serial No.

This is the serial number of the connected SB-16D unit.

### ⑥ Unit Search

- Tap the Identify button to send an Identify command to the SB-16D. The SB-16D that receives the Identify command will respond by blinking its SIG and STATUS indicators, making it possible to confirm the corresponding device. Tapping this button again when an SB-16D is responding will send it another Identify command, which will cause it to stop responding.

- This button is not shown for virtual devices.

### ⑦ LED Brightness

This sets the brightness of the indicators on the front of the connected SB-16D.


Range: 0 – 3 (default: 3)

Tap this to open a setting value list. This can also be adjusted one step at a time by using the – and + buttons to the right.

# TASCAM IO CONTROL

## ⑧ DC POWER information

The DC power status of the connected SB-16D is shown and related settings can be made here.

Item	Explanation
DC Volt.	<p>This shows the current voltage and status of the DC power supply. A green indicator will be shown if the DC power supply is providing power normally. If the alert display setting is on, and the DC power supply voltage has become less than the alert voltage, an  indicator will be shown. No indicator will be shown if the DC power supply is not providing power (if the DC power supply voltage is below the stop voltage).</p>
Stop Voltage	<p>This sets the stop voltage. Tap this area to make the cursor blink, enabling value input. Setting range: 11 – 27 V (default: 11 V) If the SB-16D is operating with only DC power supply, it will shut down if the DC power supply goes below this voltage. If DC power is supplied from a battery, set the stop voltage according to the battery specifications. In all other cases, set this to a minimum of 11.0 V (the default value).</p>
Alert Voltage	<p>This sets the alert voltage. Tap this area to make the cursor blink, enabling value input. Setting range: 11 – 27.5 V When the Stop Voltage setting is changed, this is automatically set +0.5V higher than the Stop Voltage. Change this setting to adjust the timing if the alert is shown too quickly or too late.</p>
Alert Reset button	Tap this button to reset the Alert Voltage setting to the default value (Stop Voltage + 0.5 V).
Alert Voltage ON/OFF button	When this button is set to "OFF", the alert voltage will be disabled and will appear gray.

## ⑨ Sampling Frequency

- This shows the sampling frequency used by the connected SB-16D unit.
- Tap this to open a setting value list.  
Options: 48 kHz, 96 kHz (default)

## ⑩ Digital Reference Level

- Use this to set the digital reference level of the connected SB-16D.
- Tap this to open a setting value list.  
Options: -9 dBFS, -14 dBFS, -16 dBFS, -18 dBFS, -20 dBFS (default)

## ⑪ Analog Reference Level

- Use this to set the analog reference level of the connected SB-16D.
- Tap this to open a setting value list.  
Options: +6 dBu, +4d Bu (default), 0 dBu

### NOTE

Depending on the Digital Reference Level setting, selection of the Analog Reference Level might not be possible.

		Analog Reference Level		
		+6dBu	+4dBu	0dBu
Digital Reference Level	-9dBFS	○	×	×
	-14dBFS	×	○	×
	-16dBFS	×	○	×
	-18dBFS	×	○	○
	-20dBFS	×	○	○

○ : Selectable      × : Not selectable

## ⑫ Meter Headroom

- This shows the analog output headroom (difference between the maximum level and the reference level) of the connected SB-16D.
- Tap this to open a setting value list.  
Options: -9 dBFS, -14 dBFS, -16 dBFS, -18 dBFS, -20 dBFS (default), Ref Level

## ⑬ Network Settings

- This shows the connected IP address.
- Tap the Edit button to open the Network Settings Screen. (See "Network Settings Screen" on page 22.)

## ⑭ GPIO

Tap the Edit button to open the GPIO Settings Screen. (See "GPIO Settings Screen" on page 24.)

## ⑮ Factory Reset

Tap the Reset button to open the Factory Reset Screen. (See "Factory Reset Screen" on page 26.)

## ⑯ Control privilege status

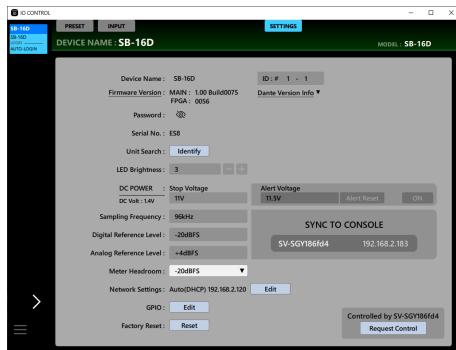
"Controlled by this application" shows that TASCAM IO CONTROL has control privileges." Controlled by [device name]" shows that another device has control privileges. "Open Control" shows that no device has control privileges.

# TASCAM IO CONTROL

## Acquiring control privileges (SETTINGS page)

### A) Requesting control privileges

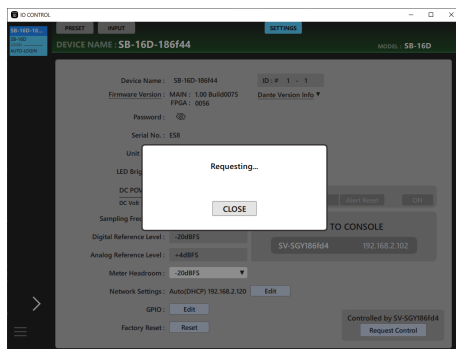
If another Sonicview has control privileges for the SB-16D shown, the various buttons will appear shaded gray as shown in the illustration below and cannot be used.



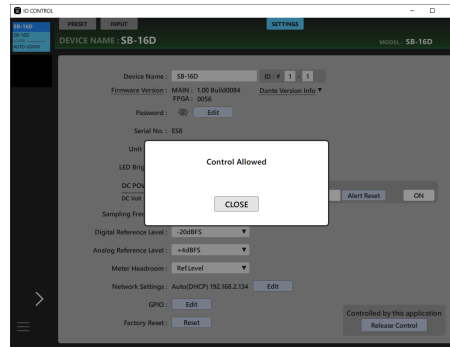
When in this state, the control privilege status area (16) will show the Dante Device name of the device that has control privileges and a Request Control button.

Tapping the Request Control button will request control privileges from the Sonicview that has them.

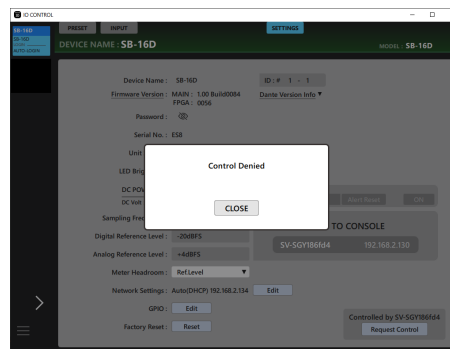
The screen shown below will appear until a response arrives. This screen can be closed, but doing so will not cancel the request.



- If permission is granted by the Sonicview that received the request  
The message will change to "Control Allowed". Tap the CLOSE button to enable the use of various operations.



- If permission is refused by the Sonicview that received the request  
The message will change to "Control Denied". Tapping the CLOSE button will not enable the use of various operations.



The "Control Allowed" or "Control Denied" message will automatically disappear after 3 seconds.

### B) Acquiring control privileges

If no device has control privileges for the SB-16D shown, operation will be possible from any device.

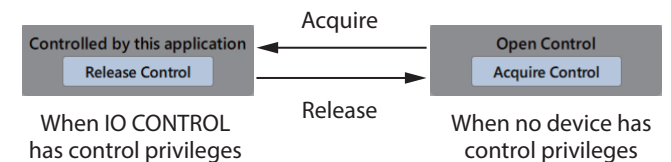
This state is called "Open Control". Tap the Acquire Control button to acquire control privileges. "Control Acquired" will appear in a message when privileges are acquired.

Doing this can prevent undesired operation from other devices.

### C) Releasing control

When IO CONTROL has control privileges, the selected SB-16D cannot be operated from other devices. Control privileges must be released to enable control from any other device.

In this state, "Controlled by this application" will appear. Tap the Release Control button to release control privileges. Doing this enables operation from all other devices.

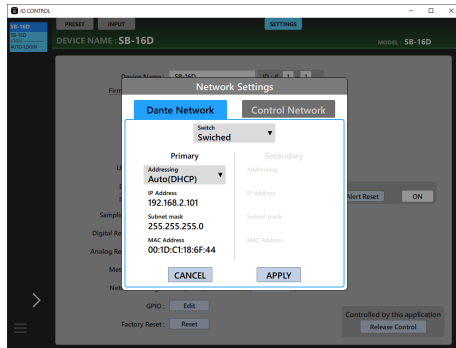


# TASCAM IO CONTROL

## Network Settings Screen

This screen shows the Dante network of the SB-16D as well as the settings and status of the Dante network used for SB-16D control.

## Dante Network page



This shows the status of the Dante network settings for the SB-16D.

When in Redundant mode, settings will be shown for the PRIMARY connector on the left and for the SECONDARY connector on the right.

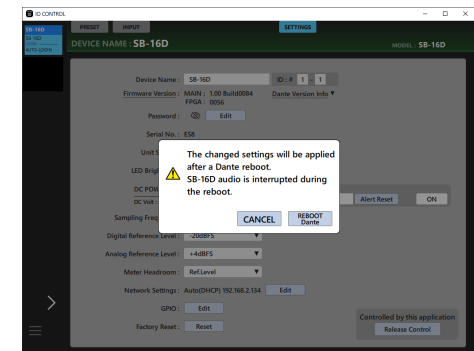
When in Switched (daisy-chain) mode, only the left side will be active.

Item	Content
Switch	This shows the selected connection mode. Tap this area to open a list for selecting Redundant or Switched (daisy-chained) mode. (default: Redundant)
Addressing	This shows the IP address setting mode. Tap this area to open a list for selecting AUTO (DHCP) or STATIC. (default: AUTO (DHCP))
IP Address	If the Addressing item is set to "AUTO", this will show the assigned IP address. If it is set to "STATIC", this will show the IP address set by the user. When the Addressing item is set to "STATIC", tap this area to make the cursor blink, enabling editing.
Subnet mask	If the Addressing item is set to "AUTO", this will show the assigned subnet mask. If it is set to "STATIC", this will show the subnet mask set by the user. When the Addressing item is set to "STATIC", tap this area to make the cursor blink, enabling editing.
MAC Address	This shows the MAC address of the Primary/ Secondary Dante port.

To confirm Dante network settings for the SB-16D, the SB-16D Dante module must be restarted.

If SB-16D Dante network settings have been changed, the APPLY button will appear highlighted.

Tap the APPLY button when it is highlighted to open a confirmation message.



Tapping the CANCEL button will not restart the unit. The original settings will be retained and changed settings will not be applied. Tap the REBOOT Dante button to confirm the changes and restart the SB-16D Dante module.

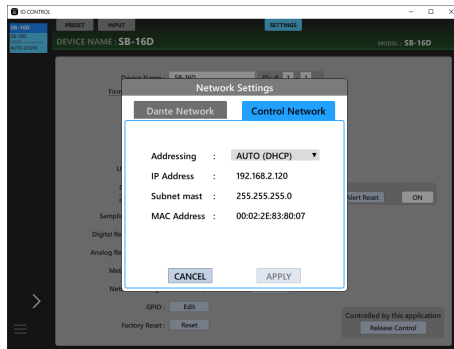
After restarting, the settings will be applied to operation.

### ATTENTION

Be aware that SB-16D Dante input and output sound will be interrupted while the SB-16D Dante module is restarting.

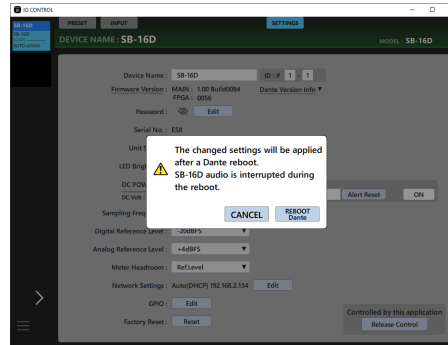
# TASCAM IO CONTROL

## Control Network page



This shows the status of the Dante network settings for SB-16D control.

If Dante network settings for SB-16D control have been changed, the APPLY button will appear highlighted. When settings are applied, the SB-16D Dante network connection will be interrupted once. For this reason, tap the APPLY button when it is highlighted to open a confirmation message.



Tap the CANCEL button to cancel the changes and restore the previous state.  
Tap the APPLY button to confirm the changes.

Item	Content
Addressing	This shows the IP address setting mode. Tap this area to open a list for selecting AUTO (DHCP) or STATIC. (default: AUTO (DHCP))
IP Address	If the Addressing item is set to "AUTO", this will show the assigned IP address. If it is set to "STATIC", this will show the IP address set by the user. When the Addressing item is set to "STATIC", tap this area to make the cursor blink, enabling editing.
Subnet mask	If the Addressing item is set to "AUTO", this will show the assigned subnet mask. If it is set to "STATIC", this will show the subnet mask set by the user. When the Addressing item is set to "STATIC", tap this area to make the cursor blink, enabling editing.
MAC Address	This shows the MAC address for SB-16D control.

# TASCAM IO CONTROL

## GPIO Settings Screen

The SB-16D GPIO port has the following functions.

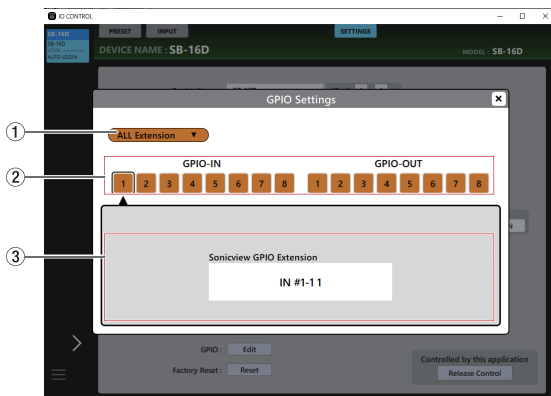
### GPIO-IN

- Muting control of SB-16D input and output signals (Local mode function)
- Mounted Sonicview extension GPIO-IN port operation (Extension mode function)

### GPIO-OUT

- Tally output for muting states of SB-16D input and output signals (Local mode function)
- Mounted Sonicview extension GPIO-OUT port operation (Extension mode function)

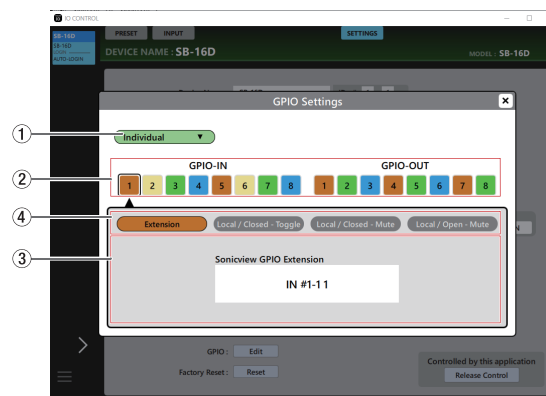
The following settings to use these functions can be made on this screen.



ALL Extension mode



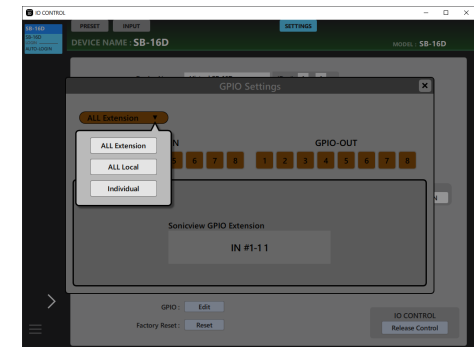
ALL Local mode



Individual mode

### ① GPIO port overall operation mode

- This shows the overall operation mode for the GPIO port.
- Tap this area to open a window where the overall operation mode for the GPIO ports of the SB-16D can be changed.



Option	Explanation
ALL Extension	The ALL Extension mode setting uses all GPIO ports as GPIO extension pins of the Sonicview that the SB-16D is mounted in.
ALL Local	The ALL Local mode setting uses all GPIO ports as pins that do the following. <ul style="list-style-type: none"> <li>• GPIO-IN: S B-16D input/output signal muting control</li> <li>• GPIO-OUT: T ally output for muting states of SB-16D input/output signals</li> </ul>
Individual	In this mode, the operation of each GPIO port is set individually.

Tap an option to switch the overall operation mode for the GPIO port of the SB-16D.



# TASCAM IO CONTROL

## ② Pin number buttons

- Tap this area to select a pin and show its settings in the Sonicview GPIO Extension display area (③), the operation/action mode switching buttons for the individual pin (④) and the input/output signal selection status display area (⑤).
- When the overall operation mode for GPIO ports is "ALL Local" or "Individual", tapping a pin number button will outline that button with a black frame.

## ③ Sonicview GPIO Extension display area

This shows the operation mode for the selected GPIO port in the following cases.

- When the GPIO port overall operation mode (①) is "ALL Extension"
- When the GPIO port overall operation mode (①) is "Individual" and the operation/action mode button (⑤) is "Extension"

The selected GPIO port is used as a GPIO extension pin of the Sonicview that has the subject SB-16D mounted.

Set this with the GPIO-IN and GPIO-OUT pages on the USER DEFINED CONTROLS Screen of the Sonicview that has the subject SB-16D mounted.

## ④ Operation/action mode switching buttons for individual ports

- These show the operation mode for the selected GPIO port in the following cases.
  - When GPIO port overall operation mode (①) is "ALL Local"
  - When the GPIO port overall operation mode (①) is "Individual"
- These show the operation and action modes of the selected GPIO Port.
- Tap these buttons to switch the operation and action modes of the individual port.

## For GPIO IN ports

Option	Explanation
Extension	The Extension mode setting uses the selected ports as GPIO extension pins of the Sonicview that the SB-16D is mounted in. This can only be selected when the GPIO port overall operation mode (①) is "Individual".
Local / Closed-Toggle	In this mode, when the selected IN port becomes shorted (Closed), the SB-16D input/output signal selected in the input/output signal selection status area (⑤) is muted/unmuted (toggled).
Local / Closed-Mute	In this mode, when the selected IN port becomes shorted (Closed), the SB-16D input/output signal selected in the input/output signal selection status area (⑤) is muted.
Local / Open-Mute	In this mode, when the selected IN port becomes open (Open), the SB-16D input/output signal selected in the input/output signal selection status area (⑤) is muted.

## For GPIO OUT ports

Option	Explanation
Extension	The Extension mode setting uses the selected ports as GPIO extension pins of the Sonicview that the SB-16D is mounted in. This can only be selected when the GPIO port overall operation mode (①) is "Individual".
Local / Mute-Closed	In this mode, when the SB-16D input/output signal selected in the input/output signal selection status area (⑤) is muted, the selected OUT port becomes shorted (Closed).
Local / Mute-Open	In this mode, when the SB-16D input/output signal selected in the input/output signal selection status area (⑤) is muted, the selected OUT port becomes open (Open).

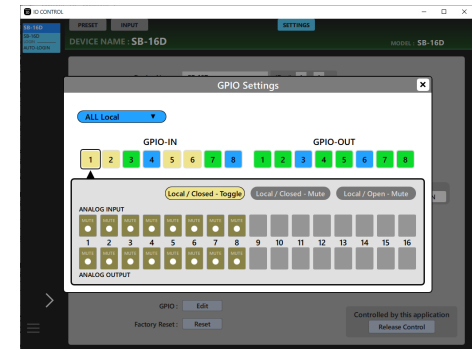
## ⑤ Input/output signal selection status

These show the operation mode for the selected GPIO port in the following cases.

- When GPIO port overall operation mode (①) is "ALL Local"
- When the GPIO port overall operation mode (①) is "Individual" and the individual port operation/action mode button (④) is "Local"

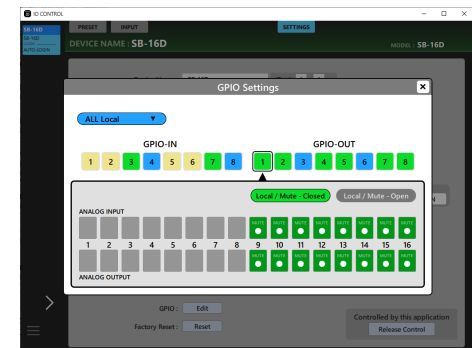
When a GPIO-IN pin is selected, the SB-16D input/output signal that is subject to muting control is selected according to that pin.

Up to 16 can be selected for muting control by GPIO-IN pin. If the selectable number is exceeded, the check fields will be shown in gray and become unselectable.



When a GPIO-OUT pin is selected, this selects the SB-16D input/output signal for mute status tally output from the selected pin.

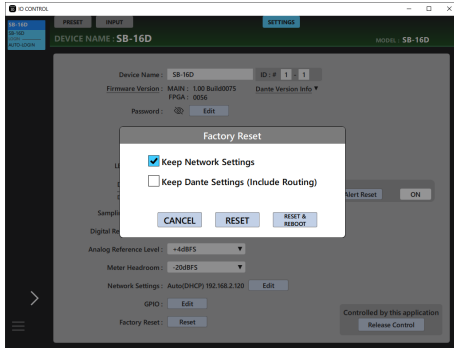
Up to 16 can be selected for muting control by GPIOOUT pin. If the selectable number is exceeded, the check fields will be shown in gray and become unselectable.



# TASCAM IO CONTROL

## Factory Reset Screen

1. Tap the Reset button to open a window where settings can be restored to their factory default values.



Item	Explanation
Keep Network Settings	If the check mark (✓) is added, the SB-16D Dante network settings will be retained. If the check mark (✓) is removed, the SB-16D Dante network settings will be restored to their factory defaults. (This has a check (✓) by default.)
Keep Dante Settings (Include Routing)	If the check mark (✓) is added, the SB-16D Dante network settings will be retained. If the check mark (✓) is removed, the SB-16D Dante settings will be restored to their factory defaults. (This does not have a check (✓) by default.)

2. Add check marks (✓) for the settings that you want to retain. Remove check marks (✓) for the settings that you want to restore to factory defaults.

### NOTE

If check marks (✓) are added to both, only settings that are not related to the Dante network and Dante will be restored to their factory defaults.

3. Tapping the RESET or RESET & REBOOT button will open the following warning messages in a window.

- Message if Keep Network Settings does not have a check mark (✓):

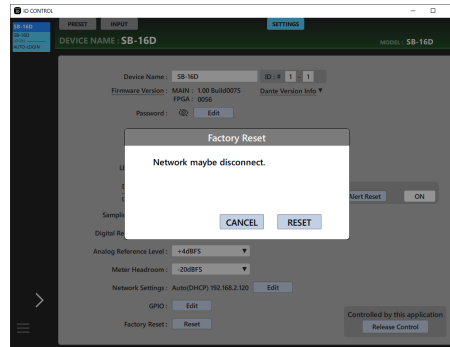
Network may be disconnected.

- Message if Keep Dante Settings (Include Routing) does not have a check mark (✓):

Audio will be interrupted.  
Dante routing will be cleared.

- Message when the RESET & REBOOT button is tapped:

Audio will be interrupted.



Message if Keep Network Settings does not have a check mark (✓)

4. Tap the RESET button in the warning message to close the window and restore the following items to their factory default settings.

- Settings without check marks (4)
- Settings other than those for Dante network and Dante

### ATTENTION

If the RESET & REBOOT button is tapped, the unit will restart after settings are restored to their factory defaults. Until restarting has completed, it will be disconnected from the Dante network. Be aware that the SB-16D input and output sound will be interrupted while the Dante module is restarting. Tap the CANCEL button to close the window without changing the settings.

# TASCAM

TEAC CORPORATION

Phone: +81-42-356-9143

1-47 Ochiai, Tama-shi, Tokyo 206-8530 Japan

---

<https://tascam.jp/jp/>

TEAC AMERICA, INC.

Phone: +1-323-726-0303

10410 Pioneer Blvd., Unit #1, Santa Fe Springs, California 90670, U.S.A

---

<https://tascam.com/us/>

TEAC UK Ltd.

Phone: +44-1923-797205

Luminous House, 300 South Row, Milton Keynes, Buckinghamshire, MK9 2FR, UK

---

<https://www.tascam.eu/en/>

TEAC EUROPE GmbH

Phone: +49-611-71580

Bahnstrasse 12, 65205 Wiesbaden-Erbenheim, Germany

---

<https://www.tascam.eu/de/>

TEAC SALES & TRADING(SHENZHEN) CO., LTD

Phone: +86-755-88311561~2

Room 817, Xinian Center A, Tairan Nine Road West, Shennan Road, Futian District, Shenzhen, Guangdong Province 518040, China

---

<https://tascam.cn/cn/>